

# Application : *Feed Rate Control System*



**UPC POWER CELL**

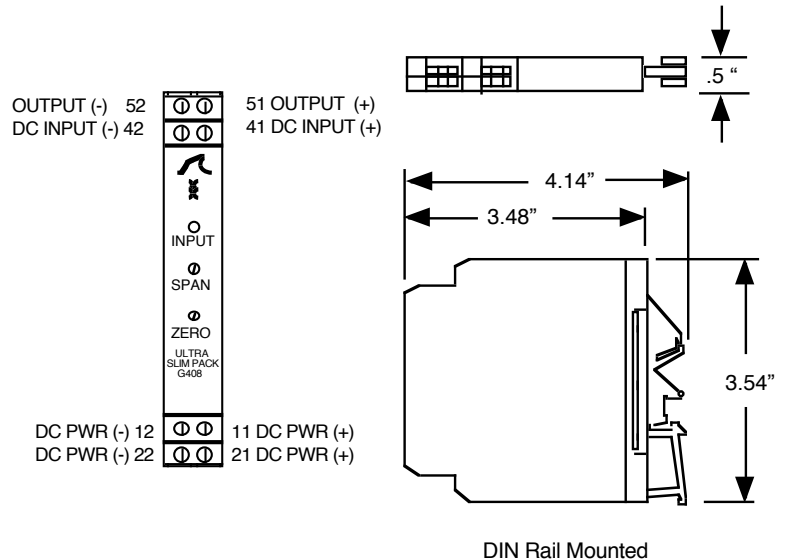
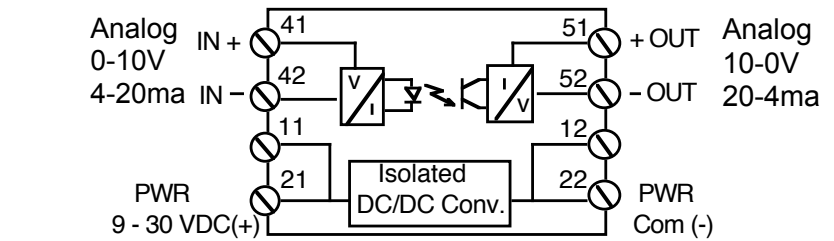
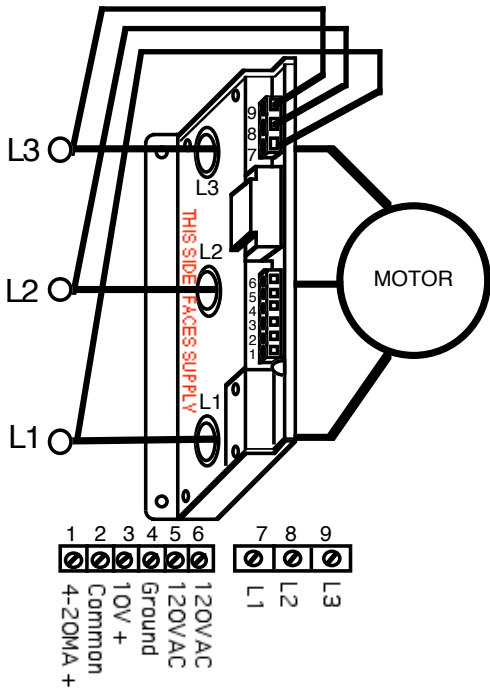
The UPC Power Cell and the Action Instruments model G408 Opto-Isolator work together to control feed to grinders, saws, crushers or to effect a valve controlling viscosity in a mixing vessel. The UPC measures motor HORSE POWER and sends a 0-10V or 4-20ma signal to the G408 which is set for an INVERSE function so that an increase in load will slow the feed or control a valve. This CONTROL FEEDBACK will stabilize the process for optimum performance. The offset (ZERO) and gain (SPAN) are set with adjustments on the G408.



**G408-0001**

- Field adjustable scale 5 to 150 H.P.
- Adjustable Response Time stops system oscillations or hunting.
- 0-10V and 4-20ma Analog Outputs
- Works on VFD's or across the line Starters

For technical data: [www.actionio.com/products/slimpak/g408.html](http://www.actionio.com/products/slimpak/g408.html)



DIN Rail Mounted

For data sheet or application help :

[sales@loadcontrols.com](mailto:sales@loadcontrols.com)



**LOAD CONTROLS  
INCORPORATED**  
53 TECHNOLOGY PARK RD.  
STURBRIDGE, MA 01566  
PH.888-600-3247 FX.508-347-2064



**Factory Assistance**

For additional information on calibration, operation and installation contact our Technical Services Group.

**703-669-1318**

[actionsupport@eurotherm.com](mailto:actionsupport@eurotherm.com)